

What Lies behind the Food Crisis in India and the Global South?

Utsa Patnaik,
 Centre for Economic Studies and Planning
 Jawaharlal Nehru University
 New Delhi, India

Chart 1a Sectoral Output and GDP per Head, 1981-2 to 2005-6

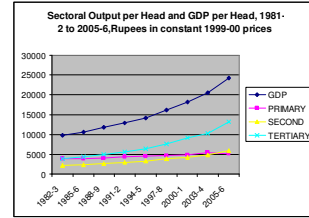


Chart 1b Share of Sectors in GDP, constant 1999-00 values

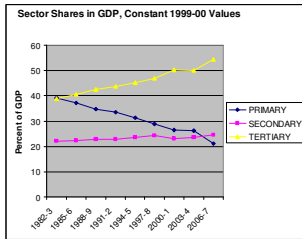


Chart 2a Annual Growth Rate per decade of Development and Total Expenditure, 1970-79 to 1990-99

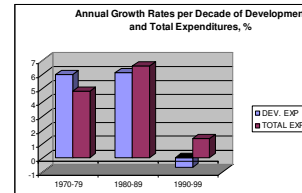


Chart 2b Annual Growth Rate of Spending on Economic and Social Services by States, 1972-79 to 1990-1999

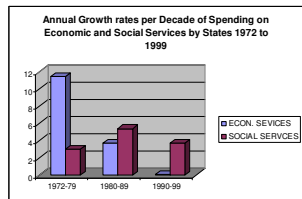


Chart 2c Decline in Rural Development Spending, 1985-90 to 2003-4

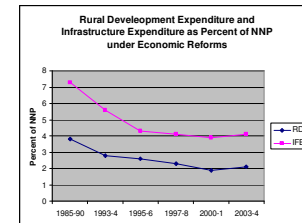


Chart 3a Unemployment Rates 1993-4 and 2004-5, All-India Rural, Female Workers

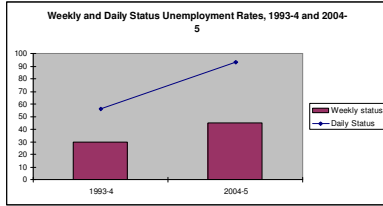


Chart 3b. Unemployment Rates during 1993-4 and 2004-5, All-India Rural, Male Workers

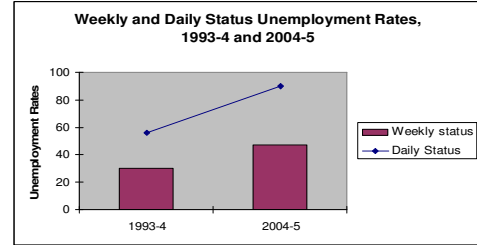


Chart 4a Coconut Price Trend in India compared to Indonesia and Philippines, 1991 to 2003

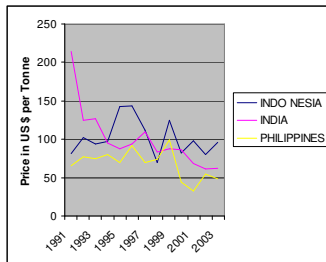


Chart 4b Index of Coconut Price 1991 to 2003, base 1991=100

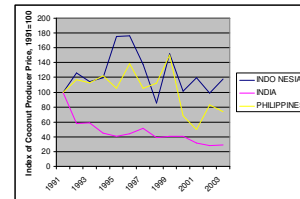


Chart 4c Price Trend of Pepper 1999-00 to 2004-05

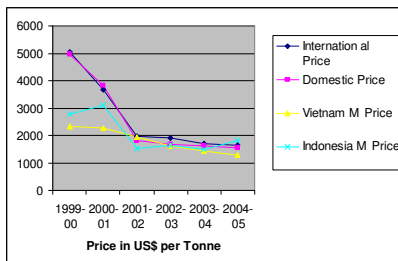


Chart 4d Index of Pepper Price 1999-00 to 2004-05 with base 1999-00 = 100

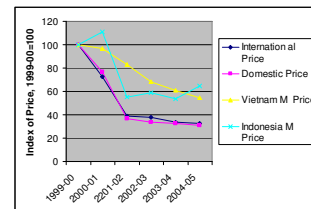


Chart 4e Recent Price Changes, March to December 2008 (Rs. Per Quintal except Cardamom which is Rs. Per 10 kg)

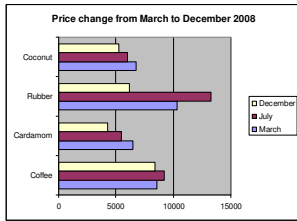


Chart 5 Farmer Suicide Rate compared to General Suicide Rate 2001

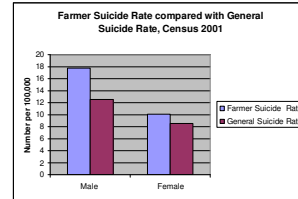


Chart 6 Direct, Indirect and Total Demand for Grain with Rising Income

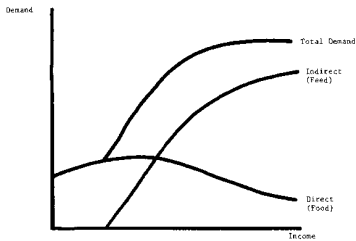


Chart 7a Decadal average Foodgrains Growth rate and Population Growth rate, 1981 to 2008

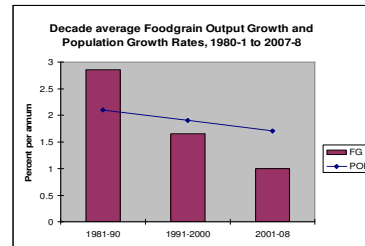
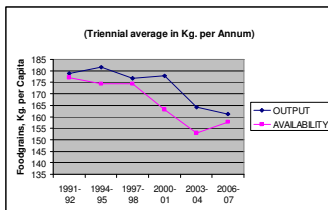


Chart 7b Foodgrains Output and Availability per Capita, India 1989-90 to 2007-08 in Kilograms per Annum



Note : Output is Net Output = 0.87.5 times Gross Output
 Availability = Net Output + Net Imports - Net Addition to Public Stocks. Both variables divided by total population for per capita values. Chart updated to 2007-08 from Patnaik, 2007b

Chart 7c Change in Protein Intake, Gms per Capita, 2004-5 compared to 1993-4

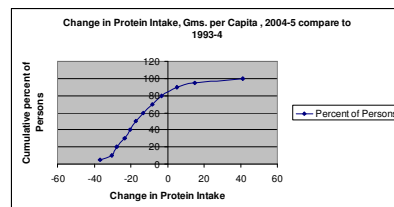


Chart 7d Output per Capita per annum of Cereals and Starchy Roots in China, 1988 to 2002, in Kilograms

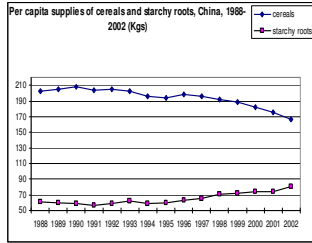


Chart 7e Six most populous Countries in Sub-Saharan Africa: Index of per Capita Cereals and All Food staples Output, Base 1979-81 = 100

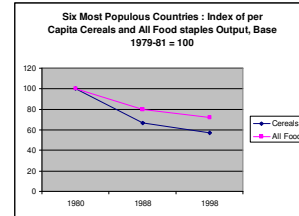
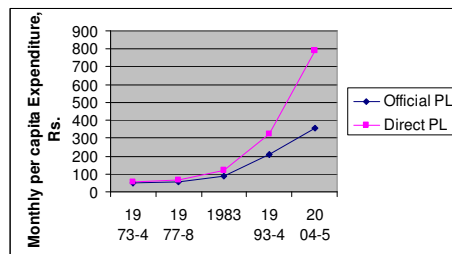


Table 1 The Rural Poor as Percent of Rural Population in India

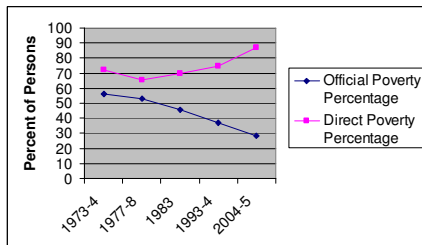
	1973-74	1993-94	2004-05
NSS ROUND:	28 ^a	50 ^a	61 ^a
RURAL			
Direct Estimate			
MPCE, Rs. required for			
1. 2400 calories	56	325	790
2. 2200 calories	49	260	700
Percent of persons below			
3. 2400 calories	72	74.5	87
4. 2200 calories	56.4	58.5	69.5
Official Estimate			
5. Official poverty line, MPCE, Rs.	49	206	356
6. Poverty percentage	56.4	37.3	28.3
7. Calorie Intake at OPL	2200	1970	1820

Chart 8a Official and Directly estimated Poverty Lines, All-India Rural, 1973-4 to 2004-5



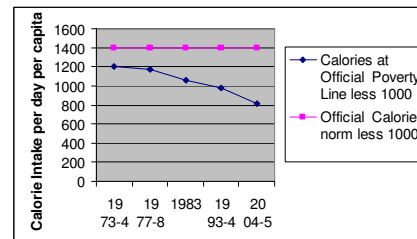
Source: Table 1 lines 1 and 5. Official poverty lines update the cost of a 1973-4 basket while direct poverty lines apply the official nutrition norm to the current data at each point of time

Chart 8b Official and Directly estimated percent of Persons in Poverty, All-India Rural, 1973-4 to 2004-5, obtained by applying the respective Poverty Lines



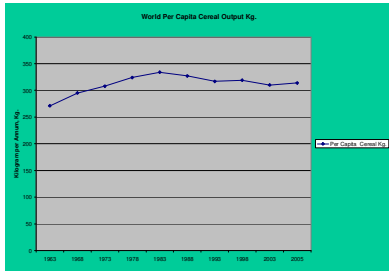
Source: Table 1, lines 3 and 6.

Chart 8c Declining Calorie Intake accessible at Official Poverty Lines, All-India Rural 1973-4 to 2004-5



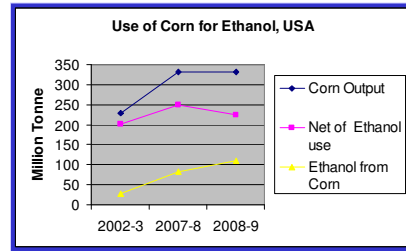
Source: Table 1 line 7

Chart 9 Per Capita Cereal Output per Annum in Kg., World 1963 to 2005 (Five year average centred on specified year)



Source: FAOSTAT after 1988 and for earlier years various issues, FAO *Food Outlook*

Chart 10 Use of Corn for Ethanol and declining net Output, USA



Source: US Department of Agriculture data